

Golden State Route—None Faster



Hours of comfort and relaxation that are filled with delight—new people to meet, new books and magazines to read, new scenes of romantic or historic interest to enjoy with the passing of every mile.



The departure a ceremony



Tower landmarks of Chicago—a few blocks from Rock Island Lines' La Salle Street Station, eastern terminal of Golden State Route

Golden State Service

Golden State means the finest service (via Rock Island and Southern Pacific Lines) direct from Chicago to Southern California—there is none faster. Golden State Route is a route of scenic and romantic interest, of striking contrasts.

Your nearest Rock Island or Southern Pacific agent (see page 15) will gladly help you plan your trip and attend to all its details for you. And all during your journey any Rock Island or Southern Pacific agent will be pleased to assist you in any way he can. Call on any of the men listed on page 15 whenever you feel that Rock Island or Southern Pacific can serve you. The service is cheerful and without any obligation.

Midwest to Southern California



Where the
Mississippi was
first bridged at
Rock Island—Davenport

THE courtesy, the thoughtfulness and the friendly interest in your welfare that are distinctive of Golden State service are noted when you begin to plan your trip.

At the ticket window you find an experienced man to help you select your train and schedule, and to serve you in the matter of accommodations.

Then smiling "Red-Cap," courteous station men. The porter directs you to your space. Your train glides gently out of the station.

First of all, become acquainted with your train. It is the "Golden State Limited" and



The friendly club car

Golden State Route—None Faster



Kansas fields of golden grain



Dining par excellence

worth more than passing note. You are on a *fine* train—in equipment, service, personnel, comfort.

Its standard Pullmans have every new convenience and comfort. An observation car with an outdoor platform, a library of well-chosen periodicals, a writing desk, and lounge chairs.

A shower and retiring room for women, with a lady's maid in attendance for shampooing, hair dressing and manicuring, and to help with the children.

The club car is luxurious and attractive. A get-together place for men. A place to smoke and to read the newspapers from the nearest large city en route, market reports and telegraphic news bulletins. A shower, a barber and valet, a porter to serve refreshing drinks and fruit juices.



Cloudcroft for play

Hark! Hear the mission chimes—announcing that a delicious meal awaits you in the dining car. At your convenience you enter the dining car. Leisurely you enjoy your meal as the train reels off the colorful panorama of your trip.

The steward is your host and he knows what that means. The waiters bring you what you want quickly and quietly. The same crew is on your dining car all the way to Los Angeles. They quickly learn your wishes and serve you accordingly throughout your entire journey.

Varied menus. Delicious food. Real Irish linen, polished silver and sparkling glassware. And prices surprisingly moderate when compared with those in good restaurants and hotels.

All the appointments of the "Golden State Limited" will delight you.



Fresh and trim en route—barber and valet service



Juarez is Old Mexico—just over the Rio Grande



Cheerful even before breakfast

Then add to the physical excellence of this great train the most vital element of all, personnel. The men who operate this train are proud of it and justly so, for there is none finer anywhere.

Also running over Golden State Route, for the traveler who may not care to ride on the extra-fare Golden State Limited, are two other fine trains—the "Apache," daily between Chicago and Los Angeles, and the "Californian," daily between Kansas City and Los Angeles.

Golden State Route also offers you through sleeper service from Minneapolis, St. Paul, St. Louis and Memphis to Los Angeles, and from Chicago direct to both San Diego and Santa Barbara.

Midwest to Southern California



McCULLOUGH ©

Follow The Apache Trail by way of Roosevelt Dam and Lake through gorgeous, tumbled, rock-strewn country. A delightful one-day break in your transcontinental rail journey is this 120-mile motor trip from Globe to Phoenix. This interesting side trip is only \$10 extra.

See the Whole Pacific Coast, U

BESIDES the Rock Island-Southern Pacific "Golden State Route," Southern Pacific offers you three other great scenic routes to California and the Pacific Northwest:

Sunset Route—New York to San Diego, Los Angeles and San Francisco via New Orleans and El Paso; Overland Route (Lake Tahoe Line), Chicago to San Francisco via Omaha and Ogden; Shasta Route—between San Francisco and Pacific Northwest via Portland.

A wide choice of routes, offered you only by Southern Pacific. Make the most of Southern Pacific service—go west one way, return another. And while you're in the West, see the whole Pacific Coast and its scenic wonders. Here's a suggestion: West over "Golden State" with The Apache

you Line, entirely different beautiful Western Oregon country over Overland Route with

Or, on to Los Angeles over the San Joaquin Flyer, daylight train, with Trees en route, thence east over to Chicago via New Orleans (same direct.) En route—Texas cattle and lazy bayous, quaint New Or



THIS good-humored picture map does not pretend to indicate all of the important cities and places of interest along the Rock Island-Southern Pacific "Golden State Route." It suggests only a few of the things to be seen, while the colored line shows only the main stem of Golden State Route without indicating all connections for through Pullman service. For exact details that you need before your trip starts, ask any Rock Island or Southern Pacific agent listed on page 15.

Golden State—None Finer nor Faster

Using These Four Great Routes

Trail and Carrizo Gorge en route. In Southern California visit mountain and seaside playgrounds.

To San Francisco over scenic Coast Line on "Daylight," following "El Camino Real" (the King's Highway) of the pioneer padres. En route—Santa Barbara, Monterey Peninsula. From San Francisco take sidetrips to playgrounds throughout Central and Northern California.

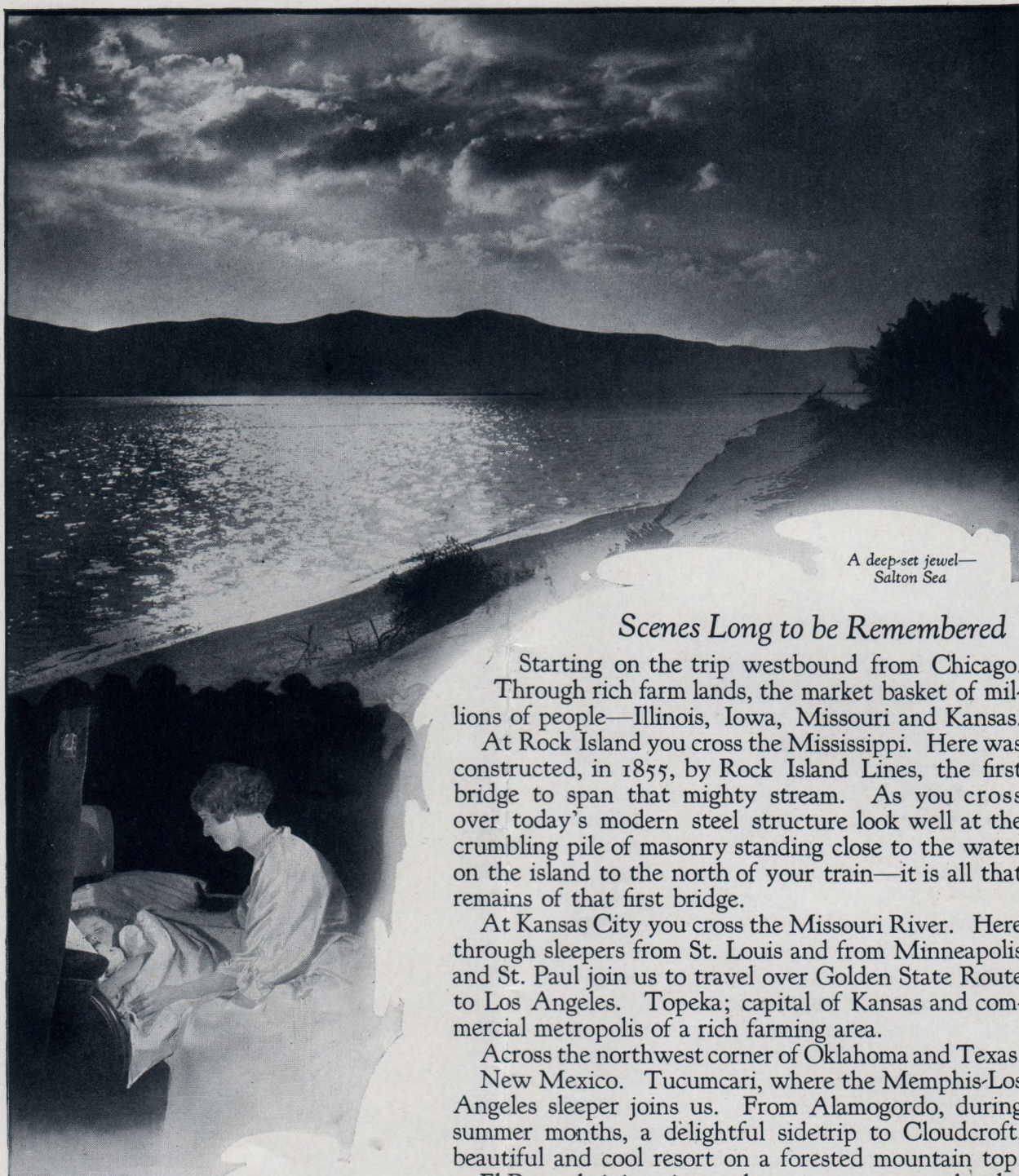
To Pacific Northwest over Shasta Route—going on "Cascade," via Klamath on new Cascade Line, a thrilling trip through a vast virgin wilderness. Mt. Shasta and Crater Lake en route.

If you wish, return east from Pacific Northwest over northern lines. Or, better, return to California over Siski-

you Route through the Sierras, thence east from San Francisco over the lovely Lake Tahoe en route.

San Joaquin Valley Line on "San Joaquin," via Yosemite and Giant Sequoia National Parks. Sunset Route to New York—or the fare as Los Angeles-to-Chicago—via the Sierras, Louisiana's plantations, the Old South.





A deep-set jewel—
Salton Sea

Scenes Long to be Remembered

Starting on the trip westbound from Chicago. Through rich farm lands, the market basket of millions of people—Illinois, Iowa, Missouri and Kansas. At Rock Island you cross the Mississippi. Here was constructed, in 1855, by Rock Island Lines, the first bridge to span that mighty stream. As you cross over today's modern steel structure look well at the crumbling pile of masonry standing close to the water on the island to the north of your train—it is all that remains of that first bridge.

At Kansas City you cross the Missouri River. Here through sleepers from St. Louis and from Minneapolis and St. Paul join us to travel over Golden State Route to Los Angeles. Topeka; capital of Kansas and commercial metropolis of a rich farming area.

Across the northwest corner of Oklahoma and Texas. New Mexico. Tucumcari, where the Memphis-Los Angeles sleeper joins us. From Alamogordo, during summer months, a delightful sidetrip to Cloudcroft, beautiful and cool resort on a forested mountain top.

El Paso, thriving city at the extreme western border

Snug and cosy

Midwest to Southern California



Spectacular views in
Carriso Gorge

of Texas. Fort Bliss, an important army post, is located here. Across the Rio Grande is Old Mexico, typical in the streets and buildings of Juarez. It's a real trip abroad, yet but five minutes away by street car from modern America.

Arizona! Why is it that popular story tellers so often find their material in this state? Arizona is colorful. It is reminiscent of the old "Wild West." Partly desert—gorgeous in its strange foliage. The desert with "the peace that passeth understanding." A great place to rest. Vast ranches where cowboys still engage in amazing feats of horsemanship. Indians, too.

Tucson, Casa Grande Ruins (reminders of prehistoric peoples); the tremendous, spectacular copper mining industries of Bisbee

© MOULIN

The luxury of a shower



*Enticing miles of Southern
California highways*



Drawing rooms and compartments offer homelike privacy

and Douglas; nearby the Chiricahua National Monument or Wonderland of Rocks, the Mission San Xavier, near Tucson—these are but a few of the high points of your trip through Arizona.

As this booklet was being printed (July, 1927), Southern Pacific was arranging for through passenger service to Mexico City along the west coast of Mexico—via Tucson to Nogales, Ariz.—from Nogales to Guadalajara, Mex., over Southern Pacific Lines of Mexico—from Guadalajara to Mexico City over National Railways of Mexico.

The Apache Trail—indescribable, awesome. An easy, inexpensive side-trip, 120 miles by automobile. A glorious adventure. Rock formations piled high into stirring monuments and painted with a bold master hand. Cliff dwell-

Midwest to Southern California



*Green-and-gold orange groves and
snow-capped mountains*

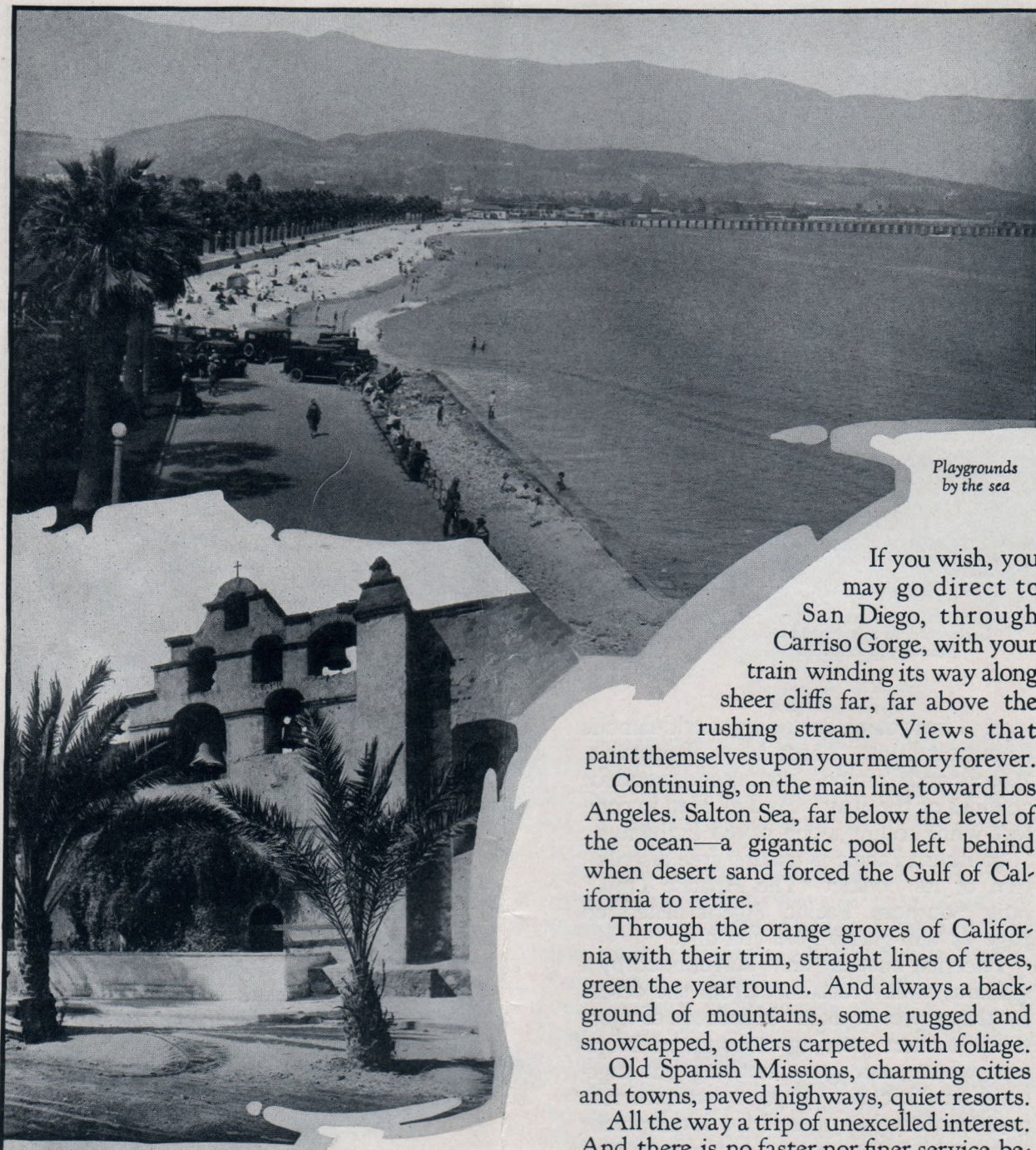
ings. Great dams, including world-famous Roosevelt Dam. Three lakes—Roosevelt, Apache and Canyon—strung end to end for 70 miles of the way. And all seen in comfort while rolling along paved highways.

Southern Pacific is making free distribution of its booklet "The Apache Trail." Any Southern Pacific Agent listed on page 15 will gladly give you one.

Phoenix, bustling city; surrounded by a spacious valley reclaimed from the desert for the service of man. Hundreds of thousands of acres growing crops under irrigation where once grew nothing but sagebrush and cactus. A great sweep of rich new territory just opened for development as a result of the recent completion of a new Southern Pacific main line through Southern Arizona via Phoenix.



Giant power—smooth and resistless



Playgrounds
by the sea

Crumbling monuments to hero padres

If you wish, you may go direct to San Diego, through Carriso Gorge, with your train winding its way along sheer cliffs far, far above the rushing stream. Views that paint themselves upon your memory forever.

Continuing, on the main line, toward Los Angeles. Salton Sea, far below the level of the ocean—a gigantic pool left behind when desert sand forced the Gulf of California to retire.

Through the orange groves of California with their trim, straight lines of trees, green the year round. And always a background of mountains, some rugged and snowcapped, others carpeted with foliage.

Old Spanish Missions, charming cities and towns, paved highways, quiet resorts.

All the way a trip of unexcelled interest. And there is no faster nor finer service between the Midwest and Southern California than "Golden State."

Midwest to Southern California



YOUR nearest Rock Island or Southern Pacific representative will give you full information as to passenger fares, Pullman reservations, time schedules, etc. He will also attend to such details as tickets, hotel and Pullman reservations, etc., for you, or help you with freight shipment. If there is a Rock Island or Southern Pacific agent in your city, he will gladly call at your office or home and personally help you arrange your trip. Phone or write him.

Rock Island Representatives

AMARILLO, TEX. (CRI&G).....H. W. Clutter, *City Passenger and Ticket Agent*
 ATLANTA, GA., 610 Healey Bldg.....C. P. Bradley, *District Passenger Agent*
 BOSTON, MASS., Rooms 409-10 Old South Bldg.....T. J. Glancy, *Dist. Passenger Agent*
 BUFFALO, N. Y., 456 Ellicott Sq. Bldg.....G. F. Hanson, *Traveling Passenger Agent*
 CHICAGO, ILL., 179 W. Jackson Blvd., Consolidated Office.....
 L. H. McCormick, *Gen. Agt., Passenger Dept.*
 CHICAGO, ILL., Room 714 La Salle Station, D. M. Wooton, *Mgr. Vacation Trav. Serv. Bureau*
 CINCINNATI, OHIO, 331-2 Dixie Terminal Bldg.....Fred Anzer, *District Passenger Agent*
 CLEVELAND, OHIO, 314 Hippodrome Bldg.....F. A. Haas, *District Passenger Agent*
 COLORADO SPRINGS, COLO., 215 First Nat. Bank Bldg.....F. H. Faus, *General Agent*
 COLORADO SPRINGS, COLO., 125 E. Pikes Peak Ave., R. S. Torrington, *Agt. Consolidated Office*
 DALLAS, TEX. (CRI&G), 118 Field St.....T. W. Bowdry, *Division Passenger Agent*
 DALLAS, TEX., Cor. Commerce and Field Sts.....Chas. Knight, *City Ticket Agent*
 DAVENPORT, IOWA, Rock Island Station.....C. C. Anderson, *Division Passenger Agent*
 DENVER, COLO., 407 U. S. National Bank Bldg.....G. W. Martin, *General Agent*
 DENVER, COLO., New Patterson Bldg.....M. L. Maury, *Dist. Passenger Agent*
 DES MOINES, IOWA, 614 Valley Nat'l. Bank Bldg.....F. R. Kuhns, *City Passenger Agent*
 DES MOINES, IOWA, 403 W. Walnut St.....Geo. R. Kline, *Agent, Consolidated Office*
 DETROIT, MICH., 209-11 Majestic Bldg.....A. D. Martin, *Gen. Agt., Passenger Dept.*
 EL PASO, TEX. (CRI&G), 713 Mills Bldg.....L. C. Bruce, *District Passenger Agent*
 FORT WORTH, TEX. (CRI&G) 300 Majestic Bldg. 116 Ninth St.....
 Lee R. Sumpter, *City Pass. Agent*
 HOT SPRINGS NAT'L PK., ARK., Rock Island Sta.....T. H. Simonds, *City Pass. Agent*
 HOUSTON, TEX. (CRI&G), 409 Scanlon Bldg.....E. E. McCullough, *Trav. Pass. Agent*
 INDIANAPOLIS, IND., 615 Merchants Bank Bldg.....J. F. Powers, *District Passenger Agent*
 KANSAS CITY, MO., 703 Walnut St.....S. A. Gilliland, *Gen. Agent, Passenger Dept.*
 KANSAS CITY, MO., 716 Railway Exch. Bldg.....J. N. Stroud, *Traveling Passenger Agent*
 T. F. Sullivan, *Traveling Passenger Agent*
 LINCOLN, NEB., 112 N. 13th St.....J. A. Duffy, *City Passenger Agent*
 LITTLE ROCK, ARK., 108 W. 3rd St.....Neal Clayton, *City Passenger Agent*

H. H. HUNT,
Assistant General Passenger Agent, Little Rock, Ark.
 C. C. GARDNER
Assistant General Passenger Agent, Des Moines, Ia.
 C. A. SEARLE
General Passenger Agent, Kansas City, Mo.

W. J. LEAHY, *Assistant Passenger Traffic Manager, Chicago, Ill.*
 L. M. ALLEN, *Vice-President and Passenger Traffic Manager, Rock Island Lines, Chicago, Ill.*

LOS ANGELES, CALIF., 809 Van Nuys Bldg.....B. F. Coons, *General Agent*
 MEMPHIS, TENN., 284-5 Shrine Bldg.....G. J. Cissel, *District Passenger Agent*
 MEMPHIS, TENN., 72 Monroe Ave.....W. F. Miller, *City Ticket Agent*
 MILWAUKEE, WIS., Room 903 Majestic Bldg.....O. D. Garvey, *Traveling Passenger Agent*
 MINNEAPOLIS, MINN., 200 Met. Life Bldg.....A. E. Dove, *Gen. Agent, Passenger Dept.*
 MINNEAPOLIS, MINN., 109 S. Fifth St.....J. P. Gehrey, *City Ticket Agent*
 NEW ORLEANS, LA., 326 Hibernia Bank Bldg.....W. J. Ford, *General Agent*
 NEW YORK, N. Y., 723 Knickerbocker
 Bldg., Broadway and 42d St.....P. W. Johnston, *Gen. Agent, Passenger Dept.*
 OKLAHOMA CITY, OKLA., 5 S. Harvey St.....O. Collins, *Division Passenger Agent*
 OMAHA, NEB., 701 Woodmen of the World Bldg.....J. S. McNally, *Div. Passenger Agent*
 OMAHA, NEB., 311 S. 16th St.....W. C. Forcade, *Agent Union Ticket Office*
 PEORIA, ILL., 418 Liberty St.....Warren Cowles, *District Passenger Agent*
 PEORIA, ILL., Cor. Jefferson & Liberty Sts.....W. E. Johnson, *Agent Consolidated Office*
 PHILADELPHIA, PA., 1107 Bankers Trust Bldg.....Geo. B. Farrow, *General Agent*
 PITTSBURGH, PA., 418 Park Bldg.....H. M. Brown, *Gen. Agent, Passenger Dept.*
 PORTLAND, ORE., 1002 Gasco Bldg.....C. E. Burnett, *Freight and Passenger Agent*
 ST. JOSEPH, MO., 421 Felix St.....John J. Goodrich, *General Agent*
 ST. LOUIS, MO., 817 Chemical Bldg.....Phil A. Auer, *District Passenger Agent*
 ST. LOUIS, MO., 322 N. Broadway.....A. W. Arnett, *City Ticket Agent*
 ST. PAUL, MINN., Cor. 4th and Robert Sts.....E. E. Light, *City Passenger Agent*
 F. B. Martin, *City Ticket Agent*
 SALT LAKE CITY, UTAH, Rm. 207-208 Walker Bk. Bldg.....A. Jensen, *General Agent*
 SAN FRANCISCO, CALIF., 493 Monadnock Bldg.....F. W. Thompson, *General Agent*
 SEATTLE, WASH., 812 White Bldg.....Geo. P. Cave, *General Agent*
 SPOKANE, WASH., 718 Old Nat. Bank Bldg., B. F. Rinkenberger, *Trav. Frl. and Pass. Agent*
 TOPEKA, KAN., Rock Island Station.....C. Lowe, *City Passenger and Ticket Agent*
 WICHITA, KAN., Room 101, Union Station.....C. E. Bascom, *District Passenger Agent*
 WICHITA FALLS, TEX. (CRI&G) 204 Staley Bldg., I. D. Brown, *Trav. Frl. and Pass. Agent*

D. McCURE
Assistant General Passenger Agent, Chicago, Ill.
 G. H. ASPER
Assistant General Passenger Agent, Chicago, Ill.
 J. G. FARMER
General Passenger Agent, C. R. I. & G., Fort Worth, Tex.

Southern Pacific Representatives

ATLANTA, GA., 320 Healey Bldg.....D. Asbury, *General Agent*
 BALTIMORE, MD., 205-6-7-8 Union Trust Bldg.....W. B. Johnson, *General Agent*
 BIRMINGHAM, ALA., 405 Woodward Bldg.....S. J. Brown, *General Agent*
 BOSTON, MASS., 204 Washington St., Room 209.....E. S. Leavitt, *General Agent*
 BUFFALO, N. Y., 204 Ellicott Square Bldg.....G. H. Vogel, *General Agent*
 CHICAGO, ILL., Sou Pac. Bldg., 33 W. Jackson Blvd., A. C. Hedlund, *Gen. Agt. Pass. Dept.*
 CINCINNATI, OHIO, 206 Dixie Terminal Bldg.....Robt. McDowell, *General Agent*
 CLEVELAND, OHIO, 1116 Hippodrome Bldg.....E. G. Cook, *General Agent*
 DENVER, COLO., 303 Boston Bldg., 17th and Champa Sts.....E. H. Williams, *Gen. Agent*
 DETROIT, MICH., 203 Majestic Bldg.....W. W. Hale, *General Agent*
 GENOA (4), ITALY, Via Roma 8a.....Brizzolesi, Kemsley & Millbourn, *General Agents*
 HAMBURG, GERMANY, 18 Glockengiesserwall.....G. Ruhr, *General Agent*
 HAVANA, CUBA, Room 307 Manzana de Gomez (Central Park), R. Menendez, *Gen. Agent*
 INDIANAPOLIS, IND., 418 Merchants Bank Bldg.....Lyon Liston, *General Agent*
 KANSAS CITY, MO., 113 Railway Exchange Bldg.....F. W. Sedgwick, *General Agent*
 LIVERPOOL, ENGLAND, 21 Water Street.....General Agent for Great Britain
 LONDON, ENGLAND, 49 Leadenhall St.....General Agent for Great Britain
 MEMPHIS, TENN., 716 Exchange Bldg.....C. A. Bevis, *General Agent*
 MEXICO CITY, MEX., Avenida Cinco de Mayo, No. 32.....F. V. Stark, *General Agent*
 MILAN, ITALY, Via Durini, 34.....Brizzolesi, Kemsley & Millbourn, *General Agents*
 MINNEAPOLIS, MINN., 1020 Metropolitan Life Bldg.....J. H. Desherow, *General Agent*
 MONTERREY, MEX., Langstroth Bldg.....Alfonso Marquez, *General Agent*

E. W. CLAPP
Traffic Manager
 SOUTHERN PACIFIC LINES
 Chicago, Ill.

F. S. MCGINNIS
Passenger Traffic Manager
 SOUTHERN PACIFIC LINES
 San Francisco, Calif.

F. B. DORSEY
Traffic Manager
 SAN DIEGO & ARIZONA RY.
 San Diego, Calif.

NEW YORK, N. Y., 531 5th Ave. (at 44th St.).....Southern Pacific Uptown Ticket Office
 NEW YORK, N. Y., 165 Broadway.....H. H. Gray, *Gen. Agent, Passenger Dept.*
 OKLAHOMA CITY, OKLA., 909 Colcord Bldg.....J. A. Eads, *General Agent*
 PARIS, FRANCE, 3 Rue Tronchet.....H. Desmidt, *General Agent*
 PHILADELPHIA, PA., 706 Packard Bldg.....F. T. Brooks, *General Agent*
 PITTSBURGH, PA., 1311 Park Bldg.....H. F. Starke, *General Agent*
 ROME, ITALY, Piazza de Spagna, 28.....Brizzolesi, Kemsley & Millbourn, *General Agents*
 ST. LOUIS, MO., 204 Carleton Bldg., 6th and Olive Sts.....L. B. Banks, *General Agent*
 TURN, ITALY, Via Lagrange, 23.....Brizzolesi, Kemsley & Millbourn, *General Agents*
 WASHINGTON, D. C., 400 Southern Bldg.....A. J. Poston, *General Agent*
 WASHINGTON, D. C., 1510 H St. (N. W.).....G. V. McArt, *Agent, Washington-Sunset Route*
 C. S. FAY, *Traffic Manager, Louisiana Lines, New Orleans, La.*
 J. T. MONROE, *General Passenger Agent, New Orleans, La.*
 C. K. DUNLAP, *Traffic Manager, Texas Lines, Houston, Tex.*
 W. C. MCCORMICK, *General Passenger Agent, Houston, Tex.*
 WM. SIMMONS, *Traffic Mgr., Sou. Pac. Steamship Lines (Morgan Line), New York, N. Y.*
 J. D. MASON, *General Passenger Agent, El Paso, Tex.*
 E. J. FENCHURCH, *Gen. Freight and Passenger Agent, Tucson, Ariz.*
 H. LAWTON, *Traffic Manager, Mexican Lines, Guadalajara, Mex.*
 C. L. McFAUL, *Asst. Passenger Traffic Manager, Los Angeles, Cal.*
 JOHN M. SCOTT, *Asst. Passenger Traffic Manager, Portland, Ore.*

**Golden
State
Route**

**Golden
State
Route**



Rock Island Lines

Southern Pacific